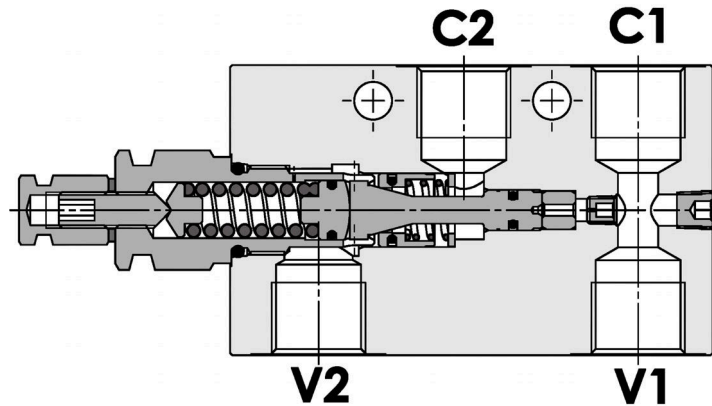
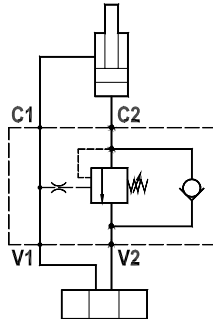




Valvola overcenter singola, montaggio in linea, pilotaggio interno
Single overcenter valve, line mounted, internal pilot

Rev.03-2010/08



SPECIFICHE TECNICHE

Materiali: corpo in acciaio zincato. I componenti interni sono in acciaio trattato termicamente.

Portata max.: 50 l/min

Taratura max.: 350 bar

Rapporto di pilotaggio: 1 : 4.25 (a richiesta 1 : 8, 1 : 11)

Regolazione pressione: mediante vite

Campo di regolazione pressione: vedere pag.02

TECHNICAL SPECIFICATIONS

Materials: body is steel made zinc plated. Internal parts are in hardened steel.

flow: up to 50 l/min

Max. setting: 350 bar

Pilot ratio: 1 : 4.25 (1 : 8 and 1 : 11 on request)

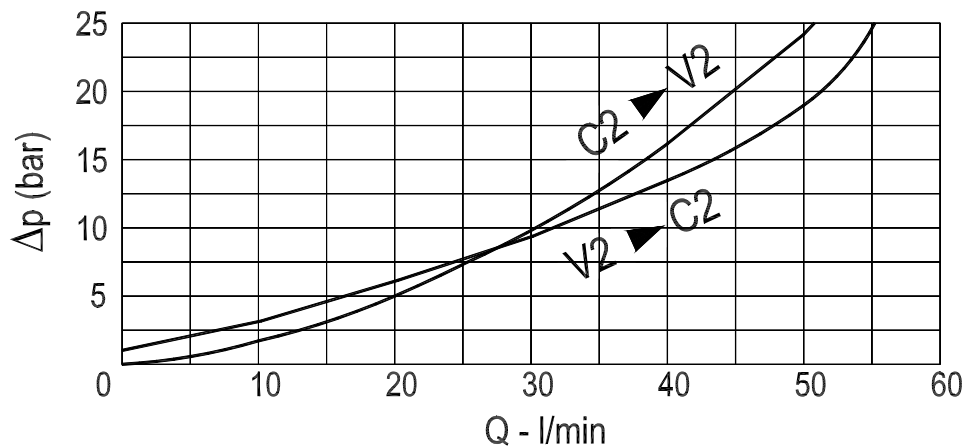
Adjustment means: leakproof screw adjustment

Adjustable pressure range: see page 02

DIAGRAMMA PERDITE DI CARICO - PRESSURE DROP CURVES

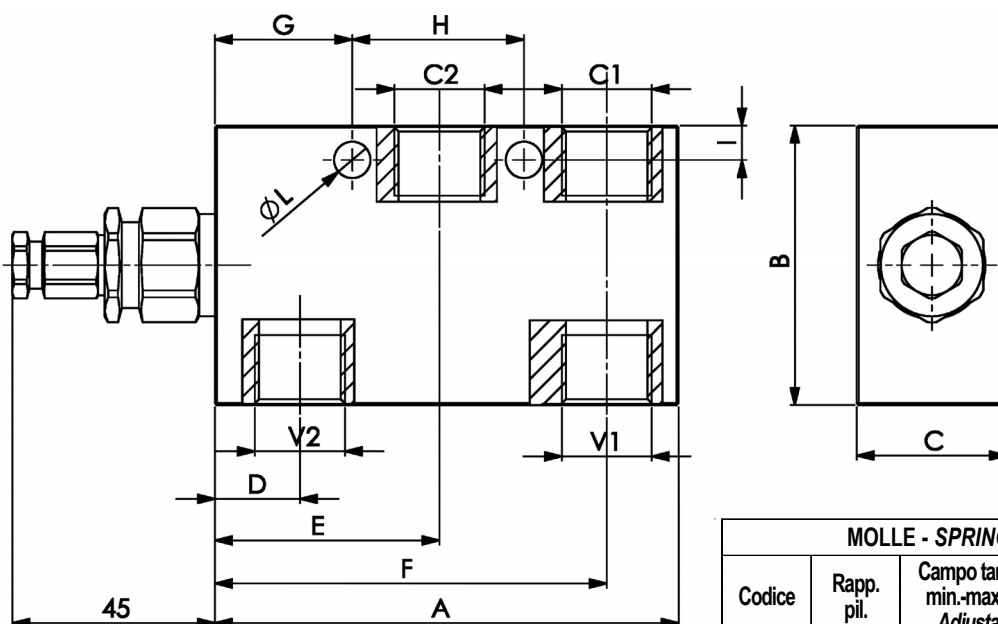
Viscosità olio 24 mm²/sec. (3,5 °E)
 Temperatura 50 °C

Oil viscosity 24 mm²/sec. (3,5 °E)
 Temperature 50 °C



Valvola overcenter singola, montaggio in linea, pilotaggio interno
Single overcenter valve, line mounted, internal pilot

Rev.03-2010/08



| MOLLE - SPRINGS | | | | * |
|-----------------|---------------------------|--|---|---|
| Codice Code | Rapp. pil. Pilot ratio | Campo taratura min.-max. bar Adjustable pressure range bar | Increment. press. bar/giro vite Pressure increase bar/tum | Taratura standard bar Standard setting bar |
| 20 | 1 : 4.25 | 60 - 210 | 70 | 170 |
| | 1 : 8 | 60 - 220 | 50 | |
| | 1 : 11 | 60 - 250 | 90 | |
| 35 | 1 : 4.25 | 80 - 350 | 120 | 280 |
| | 1 : 8 | 100 - 350 | 85 | |
| | 1 : 11 | 80 - 350 | 150 | |

| TIPO TYPE | V1-C1 V2-C2 | A | B | C | D | E | F | G | H | I | L | PESO WEIGHT |
|-------------------|----------------|-----|----|----|------|----|----|----|----|----|-----|----------------|
| | BSPP | mm | mm | mm | mm | mm | mm | mm | mm | mm | mm | Kg |
| FPO 50 S-1/4"-L-P | 1/4" | 108 | 55 | 30 | 19.5 | 52 | 91 | 32 | 40 | 8 | 8.5 | 1.230 |
| FPO 50 S-3/8"-L-P | 3/8" | 108 | 55 | 30 | 19.5 | 52 | 91 | 32 | 40 | 8 | 8.5 | 1.230 |
| FPO 50 S-1/2"-L-P | 1/2" | 108 | 65 | 35 | 19.5 | 52 | 91 | 32 | 40 | 8 | 8.5 | 1.860 |

ESEMPIO DI ORDINAZIONE - ORDERING CODE EXAMPLE

F P O 5 0 S 1 / 4 L P 2 0 B *

* 1/4 - 1/4" BSPP
 * 3/8 - 3/8" BSPP
 * 1/2 - 1/2" BSPP
 Connessioni - Port sizes

* "20" / "35":
 Campi di taratura pressione - Adjustable pressure

Guarnizioni - Seals:
 V=Viton *
 Omettere se BUNA-N - Omit if BUNA-N

Rapporto di pilotaggio - Pilot ratio
 Omettere se standard - Omit if standard *
 B = 1 : 8, C = 1 : 11